



# GRAND LIGHTING™

## GL80FX WATER/FIRE EFFECT PROJECTOR

Experience the mesmerizing illusion of rippling water with the GL80FX's slow rotating effect wheel.

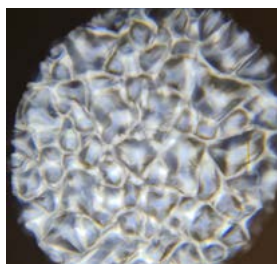
By simply changing the coloured dichroic filter, you can effortlessly create captivating fire or water effects to suit any ambiance.

With its IP65 rating, this projector is perfect for outdoor installations, yet operates quietly enough for indoor settings as well.

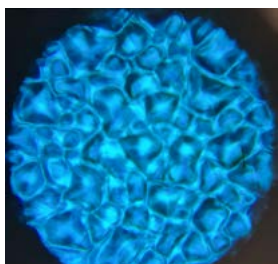
Equipped with a wide 42-degree lens, it offers expansive coverage for impressive projection displays that will enhance any environment.

### FEATURES

- Low weight and compact design
- IP65 suitable for indoor & outdoor use
- 45° Degree Lens
- Rear cooling fins and waterproof fan protected by 1.5mm mesh
- Available in either black
- IP65 rated fixture suitable for both indoor and outdoor installations
- 24 month warranty
- Cool white LED as standard. Colour can be changed by fitting a colour dichroic filter to the front lens.



No Filter



With Cyan Filter

## ELECTRICAL SPECIFICATIONS

- External power supply IP65 Meanwell HLG-80H-20A
- Supplied with Australian standard 3 pin plug 240V AC
- Power Supply Input Voltage: 100-240V AC
- Average Power Consumption: 60 Watts

## OPTICS

- Light Source: 80W LED Capsule
- Cool white 7000k LED Lifetime: 50,000 hours\*  
\*figure obtained under manufacture's test conditions

## PHOTOMETRIC DATA

	GL80FX							42 DEGREES STANDARD						
Projection Diameter (m)	1.54	1.92	2.30	2.69	3.07	3.45	3.84							
Luminance (lux)	2375	1520	1056	776	594	469	380							
Projection Distance (m)	2.0	2.5m	3.0	3.5	4.0	4.5	5.0							

## PHYSICAL DIMENSIONS

- Length: 250mm (excluding lens)
- Length: 300mm (including lens)
- Width: 190mm (with knob)
- Body Height: 135mm
- Height (with Base): 215mm
- Weight: 2.9kg
- External Power Supply:  
195mm x 62mm x 38mm

